

DEPARTMENT OF DEFENSE
DEFENSE SUPPLY AGENCY

SALE NO. 41-6202

BID OPENING:

3 DECEMBER 1975-10:00 A.M.

SEALED BID

Offering...

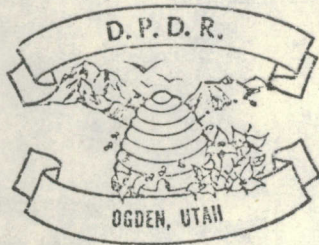
Ogden Bids
~~#19~~ *see inside*

MACHINE TOOLS AND POWER
TRANSMISSION COMPONENTS

*didn't get
any items*

*Bid made
1 Dec 1975
HJA.*

\$ 1375. total



FOR SALE SITE & MAILING
ADDRESS SEE PAGE 19

FOR FURTHER INFORMATION SEE INSIDE

Defense Property Disposal Region
 Post Office Box 53
 Defense Depot Ogden Station
 Ogden, Utah 84407

MERCHANDISING BRANCH

Sale Procedures,
 Future Sales, etc.
 Phone: A/C 801, 399-7773

SALES CONTRACTING BRANCH

High Bid Information, Payments,
 Refunds, Removal, etc.
 Phone: A/C 801, 399-7942

FOR FURTHER INFORMATION CONTACT THE RESPECTIVE OFFICES, USING ADDRESS:

Items 1 thru 36

Defense Property Disposal Office
 Naval Air Station, Miramar, San Diego, CA 92145
 Mr. R.E. Squire
 Phone: A/C 714, 235-2901

Items 37 thru 52

Defense Property Disposal Office
 North Island Naval Air Station, San Diego,
 CA 92135
 Mr. Thomas L. Smith
 Phone: A/C 714, 437-7825

Items 53 thru 59

Defense Property Disposal Office
 Naval Construction Battalion Center,
 Port Hueneme, CA 93043
 Mr. James R. Orton
 Phone: A/C 805, 982-5756

Items 60 and 61

Defense Property Disposal Office
 McClellan Air Force Base, CA 95652
 Mr. C.L. Chandler
 Phone: A/C 916, 643-3830

Items 62 thru 68

Defense Property Disposal Office
 Rough & Ready Island, Stockton, CA 95203
 Mr. Tony A. Sita
 Phone: A/C 209, 466-6031, Ext. 267
 For Shipping Information: A/C 209, 466-6031, Ext. 260

Items 69 thru 72

Defense Property Disposal Office
 Mare Island Naval Shipyard, Vallejo, CA 94592
 Mrs. Helen Webb
 Phone: A/C 707, 646-4368

Item 73

Defense Property Disposal Office
 Oakland Army Base, Oakland, CA 94626
 Mr. Willie Hansel
 Phone: A/C 415, 466-2241

Item 74

Defense Property Disposal Office
 Umatilla Army Depot, Hermiston, OR 97838
 Mrs. Edith W. Flower
 Phone: A/C 503, 567-6421

Items 75 thru 77

Defense Property Disposal Office
 Fort Lewis Logistics Center,
 Fort Lewis, WA 98433
 Mr. Bermud K. Walmer
 Phone: A/C 206, 967-5121/5206

Item 78

Defense Property Disposal Office
 Defense Depot Ogden, Ogden, UT 84407
 Mr. Daniel J. Cunningham
 Phone: A/C 801, 399-7927

Items 79 thru 85

Defense Property Disposal Office
 Tooele Army Depot, Tooele, UT 84074
 Mr. Louis D. Brems
 Phone: A/C 801, 882-2550, Ext. 2642

Items 86 and 87

Defense Property Disposal Office
 Pueblo Army Depot, Pueblo, CO 81001
 Mr. Jess Garcia
 Phone: A/C 303, 549-4938

Items 88 and 89

Defense Property Disposal Office
 Puget Sound Naval Supply Center,
 Bremerton, WA 98314
 Mr. C.A. Scott
 Phone: A/C 206, 478-7217

Item 90

Defense Property Disposal Office
 Marine Corps Supply Center, Barstow, CA 92311
 Mr. Ernie Escajeda
 Phone: A/C 714, 577-6340

Item 91

Defense Property Disposal Office
 Luke Air Force Base, AZ 85309
 Mr. Joe Damico or Mr. Robert Mahoney
 Phone: A/C 602, 935-7411, Ext. 7144

INDEX

DESCRIPTION	ITEM NUMBER	DESCRIPTION	ITEM NUMBER
Bearing Set, Sleeve.....	60	Sandblast Machine.....	20
Bending & Forming Machine.....	22,32,42,43,76,89	Sand Polisher/Grinder.....	35
Casting Machine.....	19	Saw, Band.....	4,9
Cut-Off Machine, Band Saw, Vertical Standard.....	6	Saw, Band, Metal Cutting.....	5
Drill, Glass.....	53	Saw, Radial, Overarm.....	59
Drill Press.....	40	Sawing & Filling Machine, Combination Contour.....	3
Dry Honing Machine.....	33	Shaper, Gear.....	77
Etching Machine.....	46	Shaping Machine, Horizontal Mechanical Plain, Box Table.....	18
Flanging Machine.....	51	Sheave, Cable.....	79-82
Furnace.....	23,24,44,45,64,65	Spray Gun, Metalizing, Flame, Wire....	87
Grinding Machine.....	7,8,31,74,90	Strander, Wire.....	78
Hammer, Forging.....	41	Stretch-Forming Machine.....	58
Hammer, Power.....	48	Tank, Unheated.....	86
Heater, Heat Treating.....	47,67	Tenoner, Woodworking.....	34
Honing Machine.....	49,52	Unloader.....	36
Inducto Furnace Control.....	25	Welder.....	28,37,85
Jointer, Woodworking.....	88	Welding Machine.....	55,56,62,68,70,71,91
Lathe.....	1,2,10,12,21,39,63,75	Welding Positioner, Table Type Power Operated.....	69
Machine, Molder, Plastic. Mini-Jector.....	54		
Mechanical Power Transmission Comps. & Acces.....	83,84		
Metalizing Equipment.....	50		
Metalworking Machinery & Acces.....	17,79		
Milling Machine.....	11,13,14,38,61,72		
Nail Pulling Machine, Electric Powered.....	73		
Oven, Electric.....	29		
Planer, Jointer, Woodworking.....	26		
Positioner, Welding.....	30		
Power Supply, Controlled ARC.....	27		
Press, Hydraulic.....	66		
Rectifier, DC Power Supply.....	15,16		
Riveting Machine.....	57		

IT HAS BEEN DETERMINED THAT THIS PROPERTY IS NO LONGER NEEDED BY THE FEDERAL GOVERNMENT.
 SEE INSIDE FRONT COVER FOR NAME, ADDRESS, AND TELEPHONE NUMBER OF PERSONS TO CONTACT
 FOR FURTHER INFORMATION AND/OR INSPECTION OF PROPERTY LISTED IN THIS IFB.

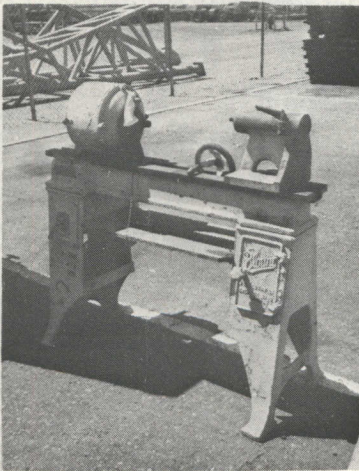
ITEMS 1 THRU 36 ARE LOCATED AT THE NAVAL AIR STATION,
 MIRAMAR, SAN DIEGO, CALIFORNIA

152.

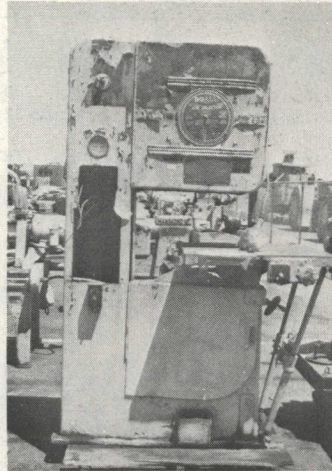
1. LATHE, WOODWORKING: Oliver Mach. Co., Model 51B, Serial 50307 floor type. Powered by Howell induction motor, Serial 302270, 220 V, 3 phase, 60 cycle. Table length 86", O/A 48" H, 17" W, 102" L. Parts damaged including surface rusted. Parts missing including chucks, tool rest, attachments and accessories. Outside - Used - Poor Condition
 Total Cost \$452
 Est. Total Wt. 600 lbs. 1 EACH

2. LATHE, WOODWORKING: Blount Co., yr., model and serial unknown, floor type. Powered by electric motor, 5 HP, 440 V, 3 phase, 60 cycles, Serial 1217151. Table length 40". Parts damaged including surface rusted. Parts missing including chucks, tool rests, attachments and accessories. Outside - Used - Poor Condition
 Total Cost \$452
 Est. Total Wt. 350 lbs. 1 EACH
 O/A shipping dim: 47" H, 21" W, 51" L.

130



3. CONTINUED



955.

4. SAW, BAND: 1942, Yates American Mach. Co., Model Y36, Serial B16762, floor mounted, 36" throat, work table 36" x 36". Powered by electric motor, The Louis Allis Co., 5 HP, 220/440 V, 3 phase, 60 cycle, 870 RPM, 15.2/7.6 amps. Parts damaged including motor housing broken, saw blade, wiring, surface rust. Outside - Wood Skidded - Used - Poor Condition - Repairs Required
 Total Cost \$2100
 Est. Total Wt. 2500 lbs. 1 EACH
 O/A shipping dim: 100" H, 47" W, 64" L.

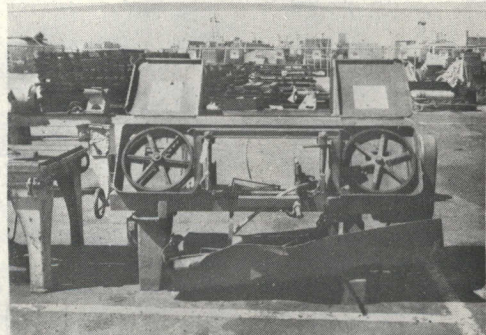
565.

5. SAW, BAND, METAL CUTTING: Machine Tool Div., Kalamazoo Tank & Silo Co., Model 1220 W, Serial LJ 798. Powered by electric motor, The Peerless Electric Co., 1 HP, 208 220/440 VAC, 50/60 cycle, 3 phase, 3.6/1.8 amps, 1450/1750 RPM. Machine can take a 1" wide, 13' 11" long saw blade. Parts damaged including drip pan, surface rusted. Parts missing including blade and accessories. Outside - Used - Poor Condition - Repairs Required
 Total Cost \$1165
 Est. Total Wt. 2000 lbs. 1 EACH
 O/A shipping dim: 43" H, 36 1/2" W, 85" L.

201.

689.

3. SAWING AND FILLING MACHINE, COMBINATION CONTOUR: Doall Western Co., Model V26, Serial 26451521, 26" throat, max. saw length 177", hydraulic tilt and power feed table size 30 1/2" x 30 1/2". Powered by Westinghouse Induction Motor, Serial 50745, Style 1168723, 1.5 HP, 220/440 V, 3 phase, 60-50 cycles, 725/1435 RPM, 4.4/2.2 amps, O/A dim: 86 3/4" H, 52 1/2" W, 56 1/2" L. Parts damaged including body, wiring, controls, gears, switches, surface rusted. Parts missing including switches, controls, motor housing, electrical wiring, attachments and accessories. Outside - Used - Poor Condition
 Total Cost: \$3650
 Est. Total Wt: 2800 lbs. 1 EACH



CONTINUED

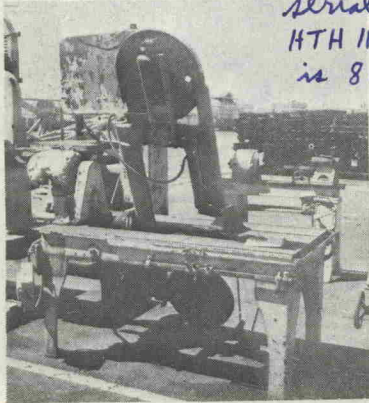
IT HAS BEEN DETERMINED THAT THIS PROPERTY IS NO LONGER NEEDED BY THE FEDERAL GOVERNMENT.

SEE INSIDE FRONT COVER FOR NAME, ADDRESS, AND TELEPHONE NUMBER OF PERSONS TO CONTACT FOR FURTHER INFORMATION AND/OR INSPECTION OF PROPERTY LISTED IN THIS IFB.

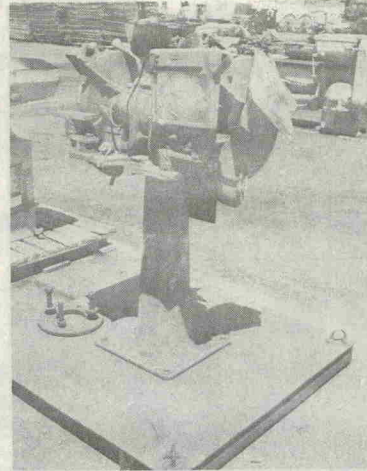
6. CUT-OFF MACHINE, BAND SAW, VERTICAL, STANDARD: 1942, Armstrong Blum Mfg. Co., Model Marvel Metal Band Saw No. 8, Serial 81743, tilting column, manual feed, multiple speed, 18" x 18" work capacity, chain drive. Powered by a multispeed induction motor, Lewis Allis Co., Serial 42621, 1.5/.75 HP, 220 V, 3 PH, 60 cycle, 1740/870 RPM, 5.6/3.4 amps. Parts damaged including switches, wiring, drive chains, unpainted surfaces rusted. Parts missing including blade, and accessories. Outside- Used - Poor Condition - Repairs Required
 Total Cost \$1510
 Est. Total Wt. 2000 lbs. 1 EACH
 O/A shipping dim: 81 1/2" H, 36" W, 78" L.

406.

1503.



serial no of HTH INC SAW is 81791



9. SAW, BAND: Yates American Mach. Co., Model Y36, Serial B19506, floor mounted, 36" throat, work table 36" x 36", powered by an electric motor, 5 HP, 220 V, 3 phase, 60 cycle. Parts detached but included, wheel cover guard, work table, blade wheel. Parts damaged including motor drive shaft, upper wheel shaft, motor base broken, table tilt housing broken, body dented, unpainted surfaces rusted. Parts missing including saw blade and accessories. Outside - Wood skidded - Used - Poor Condition - Repairs Required
 Total Cost \$1175
 Est. Total Wt. 2500 lbs. 1 EACH
 O/A shipping dim: 100" H, 38" W, 62" L.

33.

375.

7. GRINDING MACHINE, CARBIDE TOOL: Hammond Machinery Builders Inc., Model W10, Serial 4483, floor type, pedestal mounted, double end, wet, tilt work tables, 10" dia. wheel, with coolant pump, spindle speed 1900 RPM. Powered by an electric motor. Parts damaged including pump, wiring, fittings, controls. Parts missing including motor, wheel, control fittings and accessories. Outside - Used - Poor Condition - Repairs Required
 Total Cost \$358
 Est. Total Wt. 600 lbs. 1 EACH
 O/A shipping dim: 48" H, 29" W, 47 1/2" L.

11.

231

10. LATHE: The Nebel Machine Tool Co., Series LN, Serial 437116. Powered by GE motor, 5 HP, 440 V, 60 cycle, 3 phase, 1735 RPM, spindle speeds 12, 20, 36, 58, 80, 130, 245, 400. Parts damaged including wiring, drip tray, surface rusted. Parts missing including drive belts, control handles, chucks and accessories. Outside - Used - Poor Condition - Repairs Required
 Total Cost \$1000
 Est. Total Wt. 3000 lbs. 1 EACH
 O/A shipping dim: 50" H, 45" W, 120" L.

101.

1330.

8. GRINDING MACHINE: Mfr., model and serial unknown, double end, pedestal mounted. Powered by an electric motor, HP unknown, 220/440 V, 3 phase, 60 cycle. Grinding wheel 10" x 2", shaft dia. 1 1/8", pedestal is mounted on a steel pallet size 48" x 48". O/A dimension of grinder with pedestal 51 1/2" H, 32" W, 19" D. Parts damaged including surface rusted, eye shield, electrical wiring. Parts missing including 1 ea. grinding wheel, wiring, eye shield, attachments and accessories. Outside - Used - Poor Condition - Repairs Required
 Total Cost \$3040
 Est. Total Wt. 700 lbs. 1 EACH
 O/A shipping dim: 56 1/2" H, 48" W, 48" L.

31.

255

11. MILLING MACHINE: Van Norman Machine Co., year and serial unknown, Model 22L, knee type, combination horizontal and vertical, plain semi-automatically operated, 24" longitudinal table travel, 11" cross table travel, 17" vertical knee travel, head spindle speeds 40-1100 RPM, O/A table dim: 45" L, 10" W. Powered by U.S. Electrical Motors Inc., motor, 2 HP, 220/440 V, 3 phase, 60 cycle, 1200 RPM. Parts damaged including unpainted surfaces rusted. Parts missing including attachments and accessories. Outside - Used - Poor Condition
 Total Cost \$2400
 Est. Total Wt. 3500 lbs. 1 EACH
 Est. shipping dim: 70" H, 64" W, 58 1/2" L.

2214

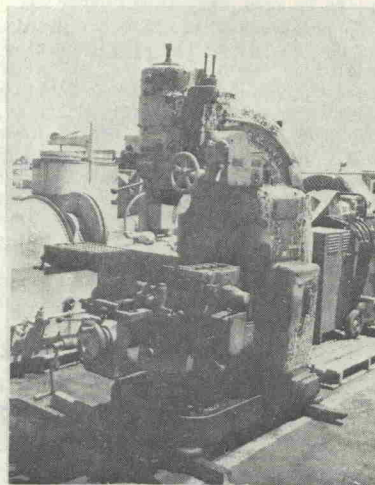
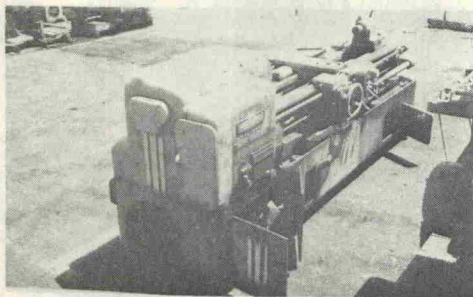
1021

CONTINUED

IT HAS BEEN DETERMINED THAT THIS PROPERTY IS NO LONGER NEEDED BY THE FEDERAL GOVERNMENT.

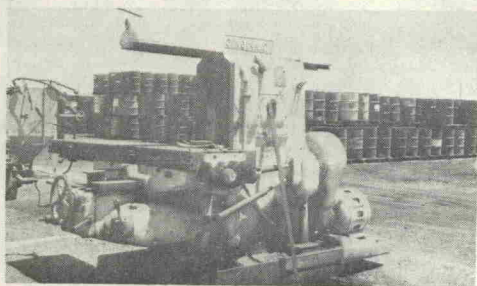
SEE INSIDE FRONT COVER FOR NAME, ADDRESS, AND TELEPHONE NUMBER OF PERSONS TO CONTACT FOR FURTHER INFORMATION AND/OR INSPECTION OF PROPERTY LISTED IN THIS IFB.

12. LATHE, HEAVY DUTY: 1952, The Monarch Machine Tool Co., model unknown, Serial 34904, size 13", actual swing 15.5", distance between centers 54". Powered by DC motor, Reliance, Type T, Serial LLT15182T3, 230 V, O/A dim: 51" H, 43" W, 127" L. Parts damaged including controls, unpainted surfaces rusted. Parts missing including chucks, attachments and accessories. Outside - Used - Poor Condition
Total Cost \$17,106
Est. Total Wt. 6200 lbs. 1 EACH



15. RECTIFIER, DC POWER SUPPLY: P. R. Mallory & Co. Inc., Serial 56695, Type K28PA300, P/N C400286, Spec. 7064622, DC output 300 amps, 28 V, AC input 230/460 V, 30/15 amps, 60 cycles, 3 phase. Portable, mounted on two solid rubber tires. Outside - Used - Poor Condition
Total Cost \$250
Est. Total Wt. 300 lbs. 1 EACH
O/A shipping dim: 51" H, 26" W, 25" L.

13. MILLING MACHINE: Knee type, horizontal, plain, Cincinnati Milling Machine Co., Model 5 HP, Serial 8A5PIL-22, 50" table travel, O/A table dim: 83" L, 21" W. Powered by Wagner Electric Co., Motor, 20 HP, 220/440 VAC, 3 phase, 60 cycle, 1750 RPM. Parts damaged including electrical control panel, wiring, hand cranks, surface rusted. Parts missing including tool head, accessories and attachments. PEC 3417-2150-5026. Outside - Used - Poor Condition - Repairs Required
Total Cost \$13,159
Est. Total Wt. 11,500 lbs. 1 EACH
O/A shipping dim: 77" H, 118" W, 98 1/2" L.



16. RECTIFIER, DC POWER SUPPLY: Same description as Item 15, except: Serial 56700 1 EACH

17. METALWORKING MACHINERY: Consisting of:

- 1 ea. - Shaper, horizontal, Havir Mfg. Co., Model B, Serial 1293, 8" stroke, work table 7" x 7 1/2", O/A dim: 52" H, 21 1/2" W, 35 1/2" D.
- 1 ea. - Engraving machine, pantograph two dimension, George Groton Mfg. Co., Model 3 U, Serial 29885, work table 8" x 12". O/A dim: 49" H, 21 1/4" W, 23 1/2" D.

Both machines damaged including unpainted surfaces rusted. Both machines parts missing including motors, wiring, switches, control handles, attachment and accessories. Outside - Used - Poor Condition - Repairs Required

Total Cost \$2170
Est. Total Wt. 500 lbs. 1 LOT

14. MILLING MACHINE, VERTICAL: Year unknown, Cincinnati Milling Machine Co., Model #2, Serial 4A2VIY-75, table work surface 12" x 52". Powered by electric motor, 7 1/2 HP, 220/440 V, 60 cycle, 3 phase. Parts damaged including electrical control panel, surface rusted. Parts missing including head attachments and accessories. PEC 3417-2320-2813. Outside - Used - Poor Condition - Repairs Required
Total Cost \$16,070
Est. Total Wt. 6000 lbs. 1 EACH
O/A shipping dim: 80" H, 71" W, 81" D.

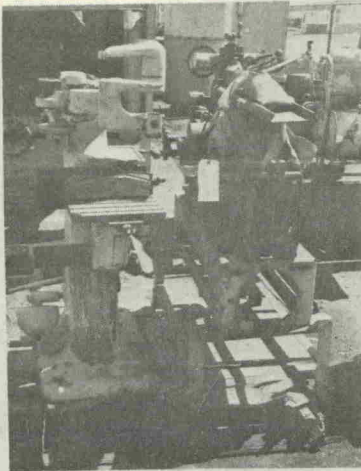
CONTINUED

CONTINUED

IT HAS BEEN DETERMINED THAT THIS PROPERTY IS NO LONGER NEEDED BY THE FEDERAL GOVERNMENT.

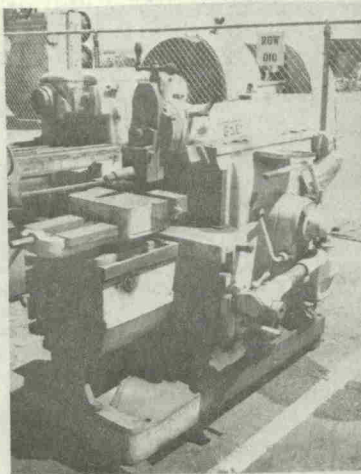
SEE INSIDE FRONT COVER FOR NAME, ADDRESS, AND TELEPHONE NUMBER OF PERSONS TO CONTACT FOR FURTHER INFORMATION AND/OR INSPECTION OF PROPERTY LISTED IN THIS IFB.

17.



368.

18. SHAPING MACHINE, HORIZONTAL MECHANICAL PLAIN. BOX TABLE: Gould & Eberhardt, Model 16" Industrial universal, Serial 3592A10, capacity 16" stroke. Powered by Westinghouse induction motor, 5 HP, 220/440 V, 3 phase, 60 cycles, 1740 RPM, floor mounted. O/A dim: 57" H, 42" W, 80" L. Parts damaged including unpainted surfaces rusted. Parts missing including attachment and accessories. Outside - Used - Poor Condition Total Cost \$3000 Est. Total Wt. 4000 lbs. 1 EACH

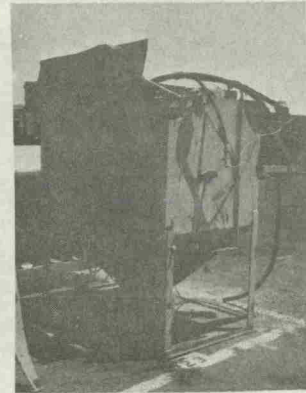


#104.
1111.

19. CONTINUED

Est. Total Wt. 6000 lbs. 1 EACH
O/A shipping dim: 63" H, 63" W, 93 1/2" L.

20. SANDBLAST MACHINE: Ruemelin Mfg. Co., Type AG, Serial 15009, size 60 x 36, one manually operated front door with counter weights. Powered by electric motor, Louis Allis Co., 1.5 HP, 220/440 V, 60 cycles, 3 phase, belt driven blower. Parts damaged including body rusted, door, counter weight arms, hoses, fittings. Parts missing including belts, nozzle attachments and accessories. Outside - Used - Poor Condition - Repairs Required Total Cost \$450 Est. Total Wt. 1800 lbs. 1 EACH O/A shipping dim: 75" H, 71" W, 58" L.



58.

21. LATHE, HEAVY DUTY: 1953, Monarch Machine Tool Co., size 16", Serial 37913, actual swing 24.5", distance between centers 54". Powered by electric motor, GE, 10 HP, 220/440 V, 60 cycle, 3 phase. With coolant pump powered by electric motor, Louis Allis Co., No. 1942448, 1 HP, 220/440 V, 3 phase, 60 cycle, 3.6/1.8 amps, 1155 RPM. Parts damaged including surface rusted. Parts missing including chucks, attachments and accessories. Outside - Used - Poor Condition Total Cost \$550 Est. Total Wt. 6000 lbs. 1 EACH O/A shipping dim: 56 1/2" H, 65" W, 128" L.



5151.

19. CASTING MACHINE: 1969, Centrifugal Casting Machine Co., Model CB24-24. Serial J-2279B, max. capacity 24" dia. x 24" L, 230/460 V, 3 phase, 60 cycle. Powered by U.S. Electrical Motor Co., Serial P4269406, 10 HP, 220/440 V, 3 phase, 60 cycle, max. RPM 1750. Parts damaged including unpainted surfaces rusted, switches, fittings and attachments. Parts missing including fittings, attachments and accessories. Outside - Used - Poor Condition - Repairs Required Total Cost \$12,640

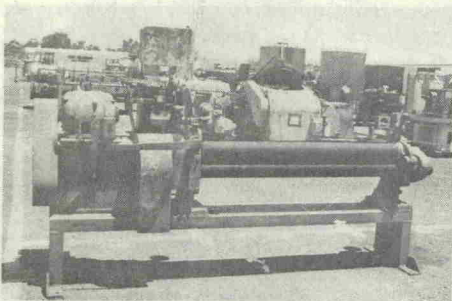
700.

CONTINUED

IT HAS BEEN DETERMINED THAT THIS PROPERTY IS NO LONGER NEEDED BY THE FEDERAL GOVERNMENT.

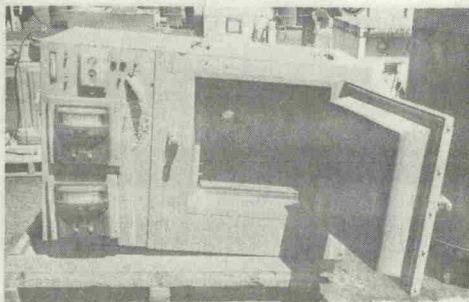
SEE INSIDE FRONT COVER FOR NAME, ADDRESS, AND TELEPHONE NUMBER OF PERSONS TO CONTACT FOR FURTHER INFORMATION AND/OR INSPECTION OF PROPERTY LISTED IN THIS IFB.

22. BENDING AND FORMING MACHINE: Mfr., model and serial unknown, 3 rolls, pyramid type. Powered by electric squirrel cage induction polyphase motor, Century Electric Co., 5 HP, 220/440 V, 50/60 cycle, 3 phase. Length of rolls 62", diameter 5". Parts damaged including unpainted surfaces rusted. Outside - Used - Poor Condition
 Total Cost \$500
 Est. Total Wt. 2500 lbs. 1 EACH
 O/A shipping dim: 120" L, 36" W, 52 1/2" H.



1937.

23. FURNACE, ELECTRIC: Blue M. Electric Co., Model CW2012, Serial EE119, 440 VAC, 3 phase, 60 cycle, 6800 watts, temp. range 150°F, to 1200°F, door entrance 23" x 23", compartment 19 3/4" W x 18" D x 19 1/4" H. Parts damaged including controls, temp. gauges. Outside - Used - Poor Condition
 Total Cost \$1550
 Est. Total Wt. 2000 lbs. 1 EACH
 O/A shipping dim: 42" H, 37 1/2" W, 55 1/2" L.



250

24. FURNACE, ELECTRIC: Linberg Engineering Co., Type 2848-E14, Serial 12599, 60 KW, 460 V, 3 phase, max. temp. 1400°F. With motor, electric, Elliott Co., Crocker Wheeler Div., 3 HP, 220/440 V, 7.6/3.8 amps, 3 phase, 60 cycle, RPM at full load 1730, rise 55c cont. Parts damaged including surface rusted. Outside - Used - Poor Condition
 Total Cost \$4477
 Est. Total Wt. 5000 lbs. 1 EACH
 O/A shipping dim: 107" H, 61" W, 75" L.

CONTINUED

24. CONTINUED



489

25. INDUCTO FURNACE CONTROL: Inductotherm Corp., Model 200, Serial J62140, high frequency rating 180 cycles, 200 KW, 750 V, 60 cycle, supply rating: 460 V, 3 phase, 335 KVA. Parts damaged including tubing, connections. Parts missing including tubing, connections and attachments. Outside - Used - Poor Condition
 Total Cost \$950
 Est. Total Wt. 2500 lbs. 1 EACH
 O/A shipping dim: 90" H, 52" W, 36" L.

1550

26. PLANER, JOINTER, WOODWORKING: Hand feed, year and model unknown, Rockwell Mfg. Co., Serial 92-8576. Powered by electric motor, depth of cut 0 to 1/2", work table 32 1/2" L, 6 1/2" W, jointer fence tilt to 45°, jointer fence 4" H, 26 1/2" L, cutter 6" W. O/A dim: 36" H, 14" W, 38" L. Parts damaged including unpainted surfaces rusted. Outside - Used - Poor Condition
 Total Cost \$350
 Est. Total Wt. 250 lbs. 1 EACH

128.

27. POWER SUPPLY, CONTROLLED ARC: M & T Welding Corp., Model 500-40, Serial SG 737. Input: 208-230-460 VAC, 60 cycle, 3 phase, 60/30 amps. Output: 500 amps, 40 VDC. Parts damaged including wiring, controls, unpainted surfaces rusted. Parts missing including wiring and controls. Outside - Used - Poor Condition - Repairs Required
 Total Cost \$1450
 Est. Total Wt. 800 lbs. 1 EACH
 O/A shipping dim: 38" H, 25" W, 34" L.

~~28~~

~~29~~

30.

28. WELDER, SHIELD ARC: The Lincoln Electric Co., Serial A52625, Type SAE, 300 amps, rating 40 V nema. Motor: 440 V, 29 amps, 3 phase, 60 cycles, 1800 RPM. Trailer mounted with towbar pull. Parts missing including trailer wheels. Outside - Used - Poor Condition
 Total Cost \$510
 Est. Total Wt. 1000 lbs. 1 EACH
 O/A shipping dim: 55 1/2" H, 47" W, 75" L.

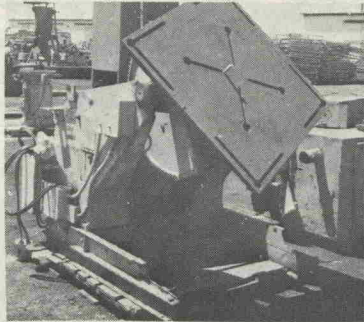
75.

IT HAS BEEN DETERMINED THAT THIS PROPERTY IS NO LONGER NEEDED BY THE FEDERAL GOVERNMENT.

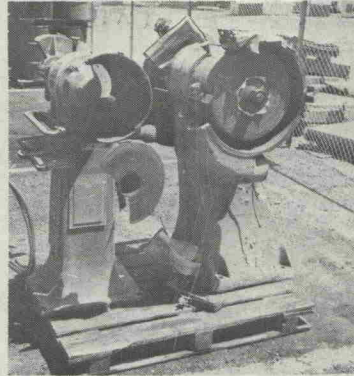
SEE INSIDE FRONT COVER FOR NAME, ADDRESS, AND TELEPHONE NUMBER OF PERSONS TO CONTACT FOR FURTHER INFORMATION AND/OR INSPECTION OF PROPERTY LISTED IN THIS IFB.

56
29. OVEN, ELECTRIC: 1945, Despatch Oven Co., Serial 24073, Style RS-0, Control-Auto., 230 V- phase - D.C., K.W. 4, 18 amps, heat 450° F, chamber dim; 38" H, 24½" W, 24½" D. Parts damaged including body dented, wiring, controls, unpainted surfaces rusted. Parts missing including wiring, controls.
Outside - Used - Poor Condition - Repairs Required
Total Cost \$275
Est. Total Wt. \$800 lbs. 1 EACH
O/A shipping dim: 75" H, 39" W, 35" L.

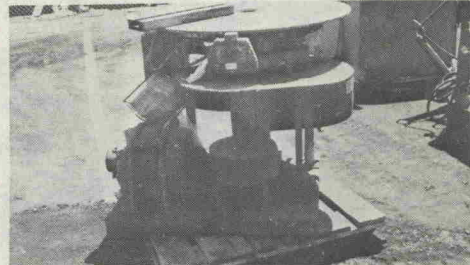
30. POSITIONER, WELDING: Table type, power operated, 1945, Ransome Concrete Machinery Co., size 13, Serial 4600, capacity 3000 lbs., C. of G. 12" above table and 12" eccentric. Motor data: 1 each - 1½ HP, 220/440 V, 60 cycle, 3 phase; 1 each - 1 HP, 220/440 V, 60 cycle, 3 phase, 40" square table. Parts damaged including frame, body dent, and surface rusted.
PEC 3436-1115-4524.
Outside - Used - Poor Condition - Repairs Required
Total Cost \$750
Est. Total Wt. 1800 lbs. 1 EACH
O/A shipping dim: 69½" H, 53" W, 60" L.



31. CONTINUED



32. BENDING MACHINE: Pedrick Tool and Machine Co., No. 1, Serial 4022, floor mounted type. Powered by G.E. Induction Motor, Serial 148440, 5 HP, 220 V, 60 cycle, 3 phase. Work table dia: 39½" o/a dim: 37½" H, 45½" W, 44" L. Without attachments or accessories. Parts damaged including controls, surface rusted.
325.
Outside - Used - Poor Condition
Total Cost \$1500
Est. Total Wt. 700 lbs. 1 EACH



31. GRINDING MACHINES: Pedestal mounted, floor type. Consisting of:

444.
1 ea - Yr., Mfg., Model and Serial unknown, double end, wheel dia 16", shaft dia 1 7/16". Powered by electric motor 5 HP, 220 V, 60 cycle, 3 phase. O/A dim: 50½" H, 33 3/4" W, 29½" L. Parts damaged including pedestal cracked, wiring, surface rust. Parts missing including eye shields, wheel guards, table and wiring.

1 ea - The U.S. Electrical Tool Co., double end, shaft dia 1½". Powered by electric motor, General Electric, D.C., Model CIN6320, 3 HP, 230 V. 11.6 amps 1750 RPM. O/A dim: 46" H, 45½" W, 20" L. Parts damaged including wiring, wheel guards, surface rusted. Parts missing including switch, eye shields, wheels, wiring.

Outside - Used - Poor Condition - Repairs Required
Total Cost \$900
Est. Total Wt. 650 lbs. 1 LOT

CONTINUED

33. DRY HONING MACHINE: Portable, 1965 & 1966, Vacuum-Blast Co. Inc., Model 41303, Spec. No. XWS-4667 (F), Trade Mark - Junior Dry Honer. Powered by air. Parts damaged including gauges, controls. Parts missing including covers, hoses, filters, gauges.
FNS 4940-872-1712.
Outside - Used - Poor Condition - Repairs Required
Total Cost \$500
Est. Total Wt. 350 lbs. 5 EACH

257.
34. TENONER, WOODWORKING: 1945, Oliver Machinery Co., Model 125-D, Serial 61484. Three Cope Head Electric Motors. The Louis Allis Co., 2 HP, 3 phase, 220 V, 60 cycles. 6.4 amps, 3500 RPM, two each mounted on control side, one each on opposite side. Two adjustable electric motors, The Louis Allis Co., 1 HP, 220 V, 60 cycles, 3.3 amps, 3500 RPM, mounted in center of machine. Floor mounted, sliding table, o/a dim: 65" L, 50" W. 57" H. Parts missing and damaged.
Outside - Used - Poor Condition - Repairs Required
CONTINUED

IT HAS BEEN DETERMINED THAT THIS PROPERTY IS NO LONGER NEEDED BY THE FEDERAL GOVERNMENT.

SEE INSIDE FRONT COVER FOR NAME, ADDRESS, AND TELEPHONE NUMBER OF PERSONS TO CONTACT FOR FURTHER INFORMATION AND/OR INSPECTION OF PROPERTY LISTED IN THIS IFB.

34. CONTINUED
 Total Cost \$2500
 Est. Total Wt. 3,000 lbs. 1 EA 1 EACH

39. LATHE: 12", Lodge & Shipley, Serial 38351, model and year unknown, Floor mounted, Powered by Century Electric Co., squirrel-cage induction polyphase electrical motor, Model SO-225-JC4-3, Serial 10Z40726, 3 HP, 3 phase, 220/440 V, 60 cycles, 1740-1450 RPM, 8/4 - 8.5/4.25 amps, continuous duty rating, temperature rise 40% for 60 cycles. Parts damaged including levers. Inside - Used - Poor Condition - Repairs Required
 Total Cost \$4580
 Est. Total Wt. 4000 lbs. 1 EACH

\$ 2222.

q-206.

35. SAND POLISHER/GRINDER: Year unknown, Beardsley & Piper Div. Pettibone Mulliken Corp. "Mulbaro", Serial MB3-13635804. Powered by electric motor, type NC225X, Serial R852441, 2.5 HP, 60 cycle, 3 phase, 220/440 V, 1740 RPM, 7.0/3.5 amps. 50" H, 39" dia. Outside - Used - Poor Condition - Repairs Required
 Total Cost \$2102
 Est. Total Wt. 1100 lbs. 1 EACH

40. DRILL PRESS: Buffalo, Model 18, upright, floor mounted, serial and year unknown. Inside - Used - Poor Condition - Repairs Required
 Total Cost \$250
 Est. Total Wt. 400 lbs. 1 EACH

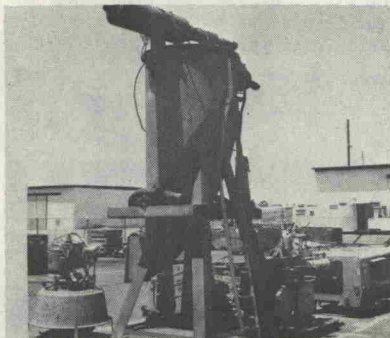
150.

36. UNLOADER: Year and Mfr. unknown, steam powered vacuum suction system type, vacuum tank mounted on 4 steel legs, has two steel channels for lifting and moving by forklift. Used for cleaning out shipboard tanks or compartments. O/A dim: 152" H, 61" W, 67" L. Parts damaged including fittings, pipes, rust. Outside - Used - Poor Condition
 Total Cost \$2223
 Est. Total Wt. 1500 lbs. 1 EACH

41. HAMMER, FORGING: Chambersburg Engineering Co., Serial 289952, model unknown. Steam or air, single frame, guided ram, 300 lb. blow. Est. dim: 8', 11" H, 4' W. Inside - Used - Fair Condition
 Total Cost \$2500
 Est. Total Wt. 4992 lbs. 1 EACH

400.

228.



42. FORMING MACHINE: 1941, Peck, Stow & Wilcox Co. Model 299-B, Serial 41, capacity 20 gauge max., air controlled. Mounted on metal stand. Inside - Used - Poor Condition
 Total Cost \$295
 Est. Total Wt. 300 lbs. 1 EACH

275

43. BENDING MACHINE: 1969, Conrac Corp. Model MBX, Serial 9295-802, tube type bender, size 1". Inside - Used - Poor Condition - Repairs Required
 Total Cost \$250
 Est. Total Wt. 400 lbs. 1 EACH

618

ITEMS 37 THRU 52 ARE LOCATED AT NAS NORTH ISLAND, SAN DIEGO, CALIFORNIA

37. WELDER, SPOT AND BUTT: Eisler Engineering Co. Inc., Serial 22533, upright, floor mounted. Primary volts 220, 68 amps, fuse 78, 60 cycles, 15 KVA, duty cycle 50%. Machine No. 215. Inside - Used - Fair Condition
 Total Cost \$150
 Est. Total Wt. 450 lbs. 1 EACH

350.

44. FURNACE: Lindberg Hevi-Duty type 11-RP-153012-20 Serial 21279, 18 KW, 1 phase, 2000 maximum temperature Fahrenheit; 115 V, 60 cycles. 3 pieces. FSN 3424-383-2854. Inside - Used - Fair Condition
 Total Cost \$3550
 Est. Total Wt. 3000 lbs. 1 EACH

750

688.

38. MILLING MACHINE: Cincinnati Milling Machine Co., model, serial and year unknown. Powered by American Aircraft Mfg. Co. electric motor, Model C104500, Serial EB56, type R, 3 phase, 3/4 HP, 220/440 V, 2-1 amps, 60/50 cycles, 3350 RPM, 9 PF, Frame 8I2. Inside - Used - Fair Condition
 Total Cost \$1000
 Est. Total Wt. 1500 lbs. 1 EACH

45. FURNACE: Same description as item 44, except: 2 pieces. 1 EACH

550

IT HAS BEEN DETERMINED THAT THIS PROPERTY IS NO LONGER NEEDED BY THE FEDERAL GOVERNMENT.

SEE INSIDE FRONT COVER FOR NAME, ADDRESS, AND TELEPHONE NUMBER OF PERSONS TO CONTACT FOR FURTHER INFORMATION AND/OR INSPECTION OF PROPERTY LISTED IN THIS IFB.

<p>202 46. ETCHING MACHINE: 1969, Western Technology Inc., Model DYNAMIL 707, Serial 359. Spray chemical milling, remote operated, horizontal, conveyorized system, caster mounted, 1/6 HP, 115/230 V, single phase, 60 cycles, speed 3420. Inside - Used - Poor Condition Total Cost \$15,395 Est. Total Wt. 800 lbs. 1 EACH</p>	<p>52 HONING MACHINE: 1946, Micromatic Hone Corp, Model H2, Serial 203, internal, hydraulic stroke, 21" maximum honing diameter. Powered by electric motor, 2 HP, 220/440 VAC, 3 phase, 1140 RPM, 60 cycles. Outside - Used - Fair Condition Total Cost \$3000 Est. Total Wt. 3100 lbs. 1 EACH \$ 312. 750</p>
<p>511 47. HEATER, HEAT TREATING, INDUCTION: 1957, Lepel High Frequency Labs Inc., Model T10-3, Serial 10-264, vacuum tube type, 23.5 KVA, 230V, 60 amps, 60 cycles. Accessories include 1 control unit with timer, Model ICT, 1 foot control. Inside - Used - Poor Condition Total Cost \$6126 Est. Total Wt. 1300 lbs. 1 EACH</p>	<p>ITEMS 53 THRU 59 LOCATED AT NCBC, PORT HUENEME, CALIFORNIA 53. DRILL, GLASS: 1950, Henry G. Lange Machine Works Model 26UB, Serial 22516. Base working surface 32" x 48" wood table top. Single spindle, 4 speed, 1/2" chuck, drills to center of 70" diameter circle. Belt driven by a electric motor, 1/3 HP, 110/220 V, 60 cycles, 1 phase, 1725 RPM. Bench type, O/A dim: 48" L x 32" W x 60" H. Inside - In wood crate - Used - Fair Condition Total Cost \$261 Est. Total Wt. 780 lbs. 1 EACH 101</p>
<p>220 48. HAMMER, POWER: 250 lb. ram, 1927, Moloch Foundry and Machinery Co., Serial E-96, model unknown, electrically operated, guided ram driven electrically. Belt driven G.E. motor Model 400036, Serial 4580220, 13.25 amps, 22V, 5 HP continuous. Outside - Used - Poor Condition Total Cost \$1234 Est. Total Wt. 3000 lbs. 1 EACH</p>	<p>54. MOLDER MACHINE, PLASTIC, MINI-JECTOR: 1959, Newberry Ind. Inc., Model 60PC100, Serial 3491F59, injection cap per shot 1 oz with 7/8" cylinder, hydraulic-mechanical, used in all thermo plastics, 110/115/120 VAC, 60 cycle, 1 phase. O/A dim: 36" L x 17" W x 73" H. Inside - Used - Poor Condition Total Cost \$3050 Est. Total Wt. 500 lbs. 1 EACH 200</p>
<p>275 49. HONING MACHINE, DRY, STATIONARY: Year unknown, Industrial Cleaning Machines Inc. Model 12542, Serial 00020, Powered by blower motor, 5 HP, 3450 RPM, 460/230 V, 60 cycles, 6.9/13.8 amps. Light and switches, 115V, 60 cycles, 70 amps. FSN: 3419-867-2372. Outside - Used - Poor Condition - Repairs Required Total Cost \$3950 Est. Total Wt. 2000 lbs. 1 EACH</p>	<p>55. WELDING MACHINE, FLEXARC, DC: 300 amps, 1943, Westinghouse, generator type, Serial 73-57F143, 60-375 amp range, 40 V, 60% duty cycle, 1450 RPM. Direct coupled to a Chrysler T118-505, Serial 6919, 6 cylinder gasoline engine, trailer mounted, towing tongue with 4 ea. steel wheels, housed in a weatherproof steel housing. Parts missing including battery and fan belt. Outside - Used - Poor Condition - Repairs Required Total Cost \$1100 Est. Total Wt. 4100 lbs. 1 EACH 256</p>
<p>1503 50. METALIZING EQUIPMENT: 1962, Plasmadyne Div. of Geotel Inc., Model SPECIAL, Serial unknown. Plasma spray, powder type, capacity 1000 amps, continous duty torch, 1/3 HP, 220/440 V, 3 phase, 60 cycles, 1725 RPM, AC/DC. Outside - Used - Good Condition Total Cost \$34,878 Est. Total Wt. 11,000 lbs. 1 EACH</p>	<p>56. WELDING MACHINE, FLEXARC, DC: Same description as item 55, except: Engine serial 5649. Parts missing including battery and hardware. 1 EACH 256</p>
<p>238 51. FLANGING MACHINE: 1942, Peck, Stow & Wilcox Co., Model 542, Serial 1627E, upright, floor mounted. Powered by electric motor Model SK-73DC3B5A; 3/4 HP, 220 V, 425/1725 RPM, temperature rise 60° C/40° C, continous duty, 60 cycles. Outside - Used - Fair Condition - Total Cost \$684 Est. Total Wt. 500 lbs. 1 EACH</p>	<p>57. RIVETING MACHINE: 5 Ton Cap., 1950, General Engineering Co., Model 10DC, Serial 36295, squeeze type, pneumatic, floor mounted, gap type, 36" throat. Parts missing including accessories and misc. hardware. Outside - Unpacked - Used - Fair Condition Total Cost \$1250 Est. Total Wt. 1400 lbs. 1 EACH 72</p>

IT HAS BEEN DETERMINED THAT THIS PROPERTY IS NO LONGER NEEDED BY THE FEDERAL GOVERNMENT.

SEE INSIDE FRONT COVER FOR NAME, ADDRESS, AND TELEPHONE NUMBER OF PERSONS TO CONTACT FOR FURTHER INFORMATION AND/OR INSPECTION OF PROPERTY LISTED IN THIS IFB.

58. STRETCH-FORMING MACHINE: Hufford Machine Works Inc., Model A10, Serial 6000 58, working capacity; 0" to 180" finish length. Hydraulic tension cylinders: 35,000 pounds capacity, 5.125" bore, 19.125" stroke. Hydraulic pumps and valves: Vickers, 2000 PSI. Table: 65" x 30" x 35 1/2". Die width for 180° bend: 18" minimum. Working floor space: 22' x 12'-4". Motor Data: 15 HP, 3 phase, 1200 RPM. Parts detached but included hydraulic fluid tank and junction box. Parts missing including misc. hardware. Inside - Used - Fair Condition
Total Cost \$16,933
Est. Total Wt. 11,600 lbs. 1 EACH

12,118.

59. SAW, RADIAL, OVERARM: 16", 1970, Stewart Avionics Inc., Model 6326-28, Serial 6328-14. Electric plant: 15KW, Canron Limited Model B291MX-2PVOCW-CP, Serial 8-131182-12, 18.7 KVA, 120/208 VAC, 60 cycle, 3 phase, 52 amps, 1800 RPM. Direct couple to a Hercules Model D1700, Serial JK3604866, 3 cylinder diesel engine. Trailer mounted, 1 1/2 Ton, 1968, Stevens Mfg. Co. Model M103A3, Serial 319, single axle, wheel size 20", "A" frame drawbar with lunette eye. Parts detached but included saw overarm unit, and wiring harness. Parts missing including radiator hose, V belts, batteries, starter coil injection pump, saw & motor blade & hardware.
USN 59-00923.
NSN 3220-00-060-8965.
Outside - Used - Poor Condition - Repairs Required
Total Cost \$8473
Est. Total Wt. 5800 lbs. 1 EACH

998.

ITEMS 60 AND 61 ARE LOCATED AT McCLELLAN AFB, CALIFORNIA

60. BEARING SET, SLEEVE: Leece Neville Co., P/N Z096-071061.
NSN: 3120-00-089-2707.
Outside - Yard 21, 206 A004 - Packed in cartons - Unused - Good Condition
Total Cost: \$7847
Est. Total Wt. 1188 lbs. 3516 EACH

.0511 each

61. MILLING MACHINE, HORIZONTAL PLAIN: 1943, Kearney & Trecker Corp., Model K, Serial 11-4415, table working surface; 65" L x 12" W, table travel 28" longitudinal, 10" across, 17" vertical, 17" maximum distance from spindle center to table top. Powered by Allis-Chalmers Mfg. Co., electric motor, 7.5 HP, 220/440 V, 3 phase, 60 cycle, floor type, mounted on wooden skid.
NSN: 3417-00-196-7326.
Outside - Yard 21, Row 176, A6 - Skidded - Used - Poor Condition - Repairs Required
Total Cost \$7519
Est. Total Wt. 2000 lbs. 1 EACH
Article BD: Military/Munitions List Items applies.
Est. shipping dim: 84" L x 84" W x 74" H.

2612

ITEMS 62 THRU 68 ARE LOCATED AT ROUGH & READY ISLAND, STOCKTON, CALIFORNIA

62. WELDING MACHINE, DC ARC: Year unknown, Lincoln Electric Co., Type SAE300, Serial A462044, generator type, 300 amp. rating, 60 duty cycle, 60 to 375 amp., 40 V, 58/29 amp., 208/220/440 VAC, 3 phase, 60 cycles. Broken parts including ammeter, undercarriage and cowling around exiter. ID# M06313.
NSN 3431-00-241-2141.
Inside - Bldg. 803 - Section 1, Row 1 - Used - Poor Condition
Total Cost \$2500
Est. Total Wt. 1440 lbs. 1 EACH

101

63. LATHE, TURRET, SADDLE: Year unknown, Warner & Swasey Co., Model M-510, Serial 1275819, fixed center, manual, 3 1/2" diameter bar, 20" swing over/bed. Powered by 30 HP, 220/440 VAC, 3 phase, 60 cycles, 1760 RPM, electric motor. ID # 93055-803454.
Inside - Bldg. 803, Section 1, Row 1 - In One Box and Unpacked - Used - Fair Condition.
Total Cost \$24,976
Est. Total Wt. 8950 lbs. 1 EACH

9500.

64. FURNACE, ELECTRIC, BOX TYPE: Year unknown, Pacific Scientific Co., Model PNM-122412, Serial P1307. Natural atmosphere, 2500° F., maximum operating temperature, Chamber Dimensions: 24" L x 12" W x 12" H. Furnace wired for 65/170 V, 2 phase, 60 cycles, 36 KW.. ID # AF-508235.
Inside - Bldg. 803, Section 1, Row 1 - On Four Skids and Unpacked - Used - Fair Condition.
Total Cost \$7550
Est. Total Wt. 3105 lbs. 1 EACH

165

65. FURNACE, ELECTRIC: Year unknown, Pacific Scientific Co., Model PNR-818-P. Serial P1310, 115 V, 1 phase, 10 KW maximum input, 1850° F, maximum temperature. Chamber Dimension: 8" diameter and 18" depth. Some parts broken including chamber bricks. Furnace is equipped with 2 each transformers and 1 each D.C. controlled reactor. ID # AF-508246.
Inside - Bldg. 803, Section 1, Row 1 - In One Box and One Unpacked - Used - Fair Condition
Total Cost \$3378
Est. Total Wt. 2240 lbs. 1 EACH

126

IT HAS BEEN DETERMINED THAT THIS PROPERTY IS NO LONGER NEEDED BY THE FEDERAL GOVERNMENT.

SEE INSIDE FRONT COVER FOR NAME, ADDRESS, AND TELEPHONE NUMBER OF PERSONS TO CONTACT FOR FURTHER INFORMATION AND/OR INSPECTION OF PROPERTY LISTED IN THIS IFB.

66. PRESS, HYDRAULIC: Year unknown, Pratt & Whitney Corp., Model PWA-16980, Serial unknown, vertical, double action, 1450 PSI, vane reforming, C-Frame. Data plate missing. ID # AF-528632. Inside - Bldg. 803, Section 1, Row 1- On One Skid and Unpacked - Used - Fair Condition. Total Cost \$8542. Est. Total Wt. 3740 lbs. 1 EACH

300.

71. WELDING MACHINE, DC ARC: Hobart Brothers Co., Type 300 Amp., Serial DW 12361, Motor Data: 20 HP, 220/440 VAC, 3 PH, 60 cycle, 1750 RPM. Unit Mounted on metal frame with 4 metal wheels & towing ring. Inside - Bldg. 655 - Used - Poor Condition. Total Cost \$403. Est. Total Wt. 350 lbs. 1 EACH

95.

67. HEATER, HEAT TREATING: 1960, Research Inc., Model 6634, Serial 1, infrared, high intensity, single panel type, electric motor 1/2 HP, 208/440 VAC, 3 phase, 60 cycles, 1725 RPM.. ID # AF-338684. Inside - Bldg. 803, Section 1, Row 1 - Used - Poor Condition. Total Cost \$29,775. Est. Total Wt. 2000 lbs. 1 EACH

#20. bid rejected

72. MILLING MACHINE, HORIZONTAL, UNIVERSAL #3 TYPE: 1944, Kearney & Trecker Corp. Model H, serial 48-4657, table size 13 1/2" x 54", travel 34", feed 1/2" to 30" per minute, spindle speed 20 to 1000 RPM, #50 taper. Belt drive, 7 1/2 HP electric motor, General Electric 220/440 VAC., 3 ph., 50/60 cycle, 1450/1750 RPM. O/A dim. 7' L., 7' W., 5 1/2' H. ID # 221-052407. Inside - Bldg. 655 - Used - Fair Condition - Repairs Required. Total Cost \$15,835. Est. Total Wt. 6500 lbs. 1 EACH

5070.

68. WELDING MACHINE, ARC, AUTOMATIC: 1959, Pandjiris Weldment Co., Model IT198TCM-Seamer, Serial 25-1949, stake type, 192" maximum welding length, 115/230 VAC, 1 phase, 60 cycles. ID # AF-338753. Inside - Bldg. 411, Row 14-23, Accessories are inside Bldg. 805, Section 1, Row 35-21- In Three Boxes, Three Wooden Skids and Unpacked - Used - Fair Condition. Total Cost \$96,000. Est. Total Wt. 69,720 lbs. 1 EACH

1387

ITEM 73 IS LOCATED AT OAKLAND ARMY BASE, OAKLAND, CALIFORNIA.

73. NAIL PULLING MACHINE, ELECTRIC POWERED: 1971, Robertson and Schwartz, Model DK107, Motor data: 2 HP, 230/460 VAC, 3 ph., 60 cycle, 1730 RPM. Equipped with Winsmith speed reducer. Floor model. NSN 3695-00-102-0120. Inside - Bldg. 802 - Used - Fair Condition. Total Cost \$12,242. Est. Total Wt. 500 lbs. 1 EACH

44.

ITEMS 69 THRU 72 ARE LOCATED AT MARE ISLAND NAVAL SHIPYARD, VALLEJO, CALIFORNIA

69. WELDING POSITIONER, TABLE TYPE, POWER OPERATED: 1949, Aronson Machine Co., Model 14HD3000, Serial H600SS10391, Table Size 52" X 52", Motor Data; 2 HP, 1725 RPM, Tilt & Rotation from Electric Motors. PEC 3436-115-4524. Inside - Bldg. 655 - Used - Fair Condition. Total Cost \$2295. Est. Total Wt. 1000 lbs. 1 EACH

1256

ITEM 74 IS LOCATED AT UMATILLA ARMY DEPOT, HERMISTON, OREGON

70. WELDING MACHINE, DC ARC: Lincoln Electric Co., "Shield Arc", Type Sae, 600 Welder, Serial A102087, Electrical Data: 220 VAC, 3 phase, 60 cycle, 1800 RPM, 40 Volt Nema. Unit mounted on Metal Frame with 3 Metal Wheels and Towing Ring. Inside - Bldg. 655 - Used - Poor Condition. Total Cost \$577. Est. Total Wt. 400 lbs. 1 EACH

101.

74. GRINDING MACHINE: Cincinnati Grinder, Inc. Howell Electric Motor Co., Model Unknown, Serial 2M2H1W-500, one wheel 19" dia. with 6" face, one wheel 10 1/2" dia. with 6" face. Floor type, polyphase induction motor, 20 H.P., 1760 RPM, 60 cyc, 220 V., 47.8 Amps., 3 ph., Type K, Temp. Rise 55 Cont., 440 V., 23.9 Amp., Code F. Separate control panel, Reliance adjustable speed control unit, 1/2 H.P., 3 ph. motor, 220/440 V. 1735 RPM, for AC operation. Inside - Bldg 12 - On Skids - Used - Good Condition - Repairs Required. Total Cost \$8649. Est. Total Wt. 980 lbs. 1 EACH

7235.

IT HAS BEEN DETERMINED THAT THIS PROPERTY IS NO LONGER NEEDED BY THE FEDERAL GOVERNMENT.

SEE INSIDE FRONT COVER FOR NAME, ADDRESS, AND TELEPHONE NUMBER OF PERSONS TO CONTACT FOR FURTHER INFORMATION AND/OR INSPECTION OF PROPERTY LISTED IN THIS IFB.

ITEMS 75 THRU 77 ARE LOCATED AT FORT LEWIS, WASHINGTON

807
75. LATHE, METALWORKING, WITH THREAD CUTTING
ATTACHMENT: Model and year unknown, Bamford-Chase Machine Co., Serial 4375, bed length 88", 54" cc, 18" swing, cross slide 15", screw on chuck, belt driven with 3 1/4" shaft, compound feed, electric motor 2 HP, 3 PH, 60 cycle, 120-220 V. Floor mounted. O/A Dim: 9'3" L x 2'5" W x 4'3" H. Outside - Bldg. 9670 - Used - Poor Condition - Repairs Required
Total Cost \$2400
Est. Total Wt. 2800 lbs. 1 EACH

1157
76. BENDING MACHINE, TUBE: Leonard Precision Products Co., Bendmaster Model PB, Serial 182, pneumatically operated, outside air supply required, air consumption 2 CFM at 80-100 PSIG. For average operation, 2 pneumatic power cylinders and 1 hydraulic control cylinder, tandem mounted, capacity to 1 1/2" OD, annealed ferrous or nonferrous tubing, right operated, maximum radius 8" centerline, clamping manual toggle, mandrel rod, tube length over mandrel 11", mandrel stroke 1" rod adjustment 2", speed control adjustable 2 1/2 to 12 RPM, return stroke 25 RPM, chain drive, 10 stop self-indexing of degree of bend, plane of bend and distance between bends, floor mounted. Length: 13' (Including sweep arm)
Width: 38" (Including sweep arm)
Height" 33" (Floor top of bed)
40" (Floor to centerline of mandrel)
Outside - Bldg. 9670 - Crated - Used - Poor Condition - Repairs Required
Total Cost \$2075
Est. Total Wt. 1500 lbs. 1 EACH

525
77. SHAPER, GEAR: Fine pitch, Fellows Gear Shaper Co., Type 3" GS, Serial 30411-557. Floor mounted, with diagram of lubricating instructions. Change gear formula:
$$\frac{\text{No. Teeth in Cutter}}{\text{No. Teeth in Gear}} \times \frac{A}{B} \times \frac{C}{D} \times \frac{1}{2} \times \frac{1}{1}$$

with mounted electric motor, Westinghouse, 3 PH, Type FS, 1/2 HP, frame 66, 1425/1725 RPM, 50/60 cycles, code JH, 208/220/440 V, 1.58/.79 amps, serv. factor 10, Serial HZ, 55°C, hours cont. Inside - Bldg. 9670, Bay 7 - Used - Poor Condition - Repairs Required
Total Cost \$6031
Est. Total Wt. 1300 lbs. 1 EACH

ITEM 78 IS LOCATED AT DEFENSE DEPOT OGDEN, UTAH

590
78. STRANDER, WIRE: Wire Machinery Corp. of America, Type HSS, Serial 37256 HR57, 7 wire, tubular, size 6 1/2, 7 1/2 HP, high torque, 220/440 V, 3 PH, 60 cycle. Inside - Whse. 2C, Bay 5 - Packed - Unused - Good Condition
Total Cost \$4745
Est. Total Wt. 6000 lbs. 1 EACH

ITEMS 79 THRU 85 ARE LOCATED AT TOOELE ARMY DEPOT, TOOELE, UTAH

79. METALWORKING MACHINERY ACCESSORIES: Consisting of:
1 Ea. - Cutter, milling machine, Morse High Speed, 3" OD x 4" face.
1 Ea. - Cutter, milling machine, National High Speed, 3" OD x 4" face.
2 Ea. - Cutter, milling machine, Shelton #6404.
2 Ea. - Cutter, milling machine, #50 O.K. Tool Co. P/N 6404X.
1 Ea. - Mandrel set: Consisting of: \$ 74.
1 ea. 2" to 2 3/4" #9.
1 ea. 2 3/4" to 3 3/4" #10.
1 ea. 1 1/2" to 2" #8.
1 ea. 1" to 1 9/16" #14. # 106.
Inside - Bldg C-02-01-50 (63001) - Packed - Used - Fair Condition
Total Cost \$478
Est. Total Wt. 100 lbs. 1 LOT

80. SHEAVE, CABLE: Insley Mfg. Corp. P/N T-54184-A or P/N M2041, 9 1/2" diameter, 2" thick, 2" dia. shaft bearing. Some rust. Outside - Area V-01-01 (63004) - Unpacked - Unused - Good Condition
Total Cost \$704
Est. Total Wt. 360 lbs. 20 EACH

81. SHEAVE, CABLE: Same description as item 94. 20 EACH

82. SHEAVE, CABLE: Same description as item 94, except:
Total Cost \$1408
Est. Total Wt. 720 lbs. 40 EACH

51.50
83. MECHANICAL POWER TRANSMISSION COMPONENTS AND ACCESSORIES: Consisting of:
5 Ea. - Motor, gear case, Howard Industries Type W 26 PC26BPO, 30 in. lbs. 115 V, 60 cycle, 28 RPM. NSN 3010-00-790-6258.
2 Ea. - Gear, Clark Equip. Co. P/N 730531. NSN 3020-00-932-1067.
79 Ea. - Bearing, rod end, 1/4" bearing opening, mounted on 5/16" male rod adapter. NSN 3120-00-535-7181.
26 Ea. - Belt, V-type matched set of 2 ea. gates P/N B-44, 5/16" side, 42" outside length. NSN 3030-00-931-0919.
Inside - Bldg C -02-01-46 (63005) - Packed - Unused - Good Condition
Total Cost \$1656
Est. Total Wt. 68 lbs. 1 LOT

IT HAS BEEN DETERMINED THAT THIS PROPERTY IS NO LONGER NEEDED BY THE FEDERAL GOVERNMENT.

SEE INSIDE FRONT COVER FOR NAME, ADDRESS, AND TELEPHONE NUMBER OF PERSONS TO CONTACT FOR FURTHER INFORMATION AND/OR INSPECTION OF PROPERTY LISTED IN THIS IFB.

84. MECHANICAL POWER TRANSMISSION COMPONENTS:
Consisting of:
1 Ea. - Gear Set, Mack P/N 741KBA195A.
NSN 3020-00-545-1539.
no bid
1 Ea. - Shaft, flexible, Aviation Electric
P/N 07213-AED33883-4.
NSN 3040-00-401-9467.
3 Ea. - Gear, bevel, American Hoist
P/N 255-D8401.
NSN 3020-00-353-1510.
Outside - Area V-01-01 (63006) - Packed and
Unpacked - Used - Fair Condition - Some Rust
Total Cost \$802
Est. Total Wt. 608 lbs. 1 LOT

85. WELDER: Harnischfeger Model WNG300B, 300 amp.
Powered by Continental Model FA-162, 6 cylinder,
inline, liquid cooled gasoline engine. Parts
damaged including shroud, control panel, hose,
carburetor. Parts missing including muffler,
battery, panel gauge and cables.
NSN 3431-00-021-8696.
200.
Outside - Area V-01-01 (63007) - Unpacked - Used -
Poor Condition
Total Cost \$2476
Est. Total Wt. 2500 lbs. 1 EACH

ITEMS 86 AND 87 ARE LOCATED AT PUEBLO ARMY DEPOT,
PUEBLO, COLORADO.

86. TANK, UNHEATED: 1950, Cooper Model AIR48E,
Automatic agitating, inside dimensions, 48" L.
x 36" W, x 30" Deep, basket size 45" L. x 30"
w x 1 1/2" deep. Two part cover, hinged on each
end of tank, operated by air cylinder.
50.
Outside - 2B6 - On pallet - Used - Poor
Condition - Repairs Required
Total Cost \$1100
Est. Total Wt. 300 lbs. 1 EACH

87. SPRAY GUN, METALIZING, FLAME, WIRE: Electric
Motor drive type, 1962, Metco Inc., Model K,
with Metco type W wire control and attached
type 2 W wire straightener, type C Automatic
Control System console for flame spraying,
Boston Gear Ratiotrol DC motor, speed control
type 3K flame spraying machine, type K
metalizing machine, cabinet with 1/3 HP and 1/4
HP motor. Accessories and assorted packaged
items, including hose, adapters, mask, and
engraving set. Parts missing.
1775
Inside - T166 - Stored on pallets, In 2 boxes
and unpacked - Used - Fair Condition - Repairs
Required
Total Cost \$16,175
Est. Total Wt. 5900 lbs. 1 EACH

Article BD: Military/Munitions List Items applies.

ITEMS 88 AND 89 ARE LOCATED AT PUGET SOUND NAVAL
SHIPYARD, BREMERTON, WASHINGTON

88. JOINTER, WOODWORKING: Moak Machine and Tool Co.,
Serial 5513, Motor driven, Five V - belt drive,
Floor mounted on 3 legs, capacity 16", 3 knives,
Peerless Motor Serial PH254-313356. 13-6.5 amps,
5 HP, 220/440V, 3 phase, 60 cycles, 1750 RPM.
201
O/A Dims: 7' L X 4'W x 4' H.
USN 251017141.
Inside - Bldg: 288ROW080 - Unpacked - Used -
Poor Condition
Total Cost \$575
Est. Total Wt. 1900 lbs. 1 EACH

89. BENDING MACHINE, PIPE: Wallace Supplies Mfg.
Co., Machine No. 1402-6, serial 2266-1831,
Ram Type, Hydraulic operated with direct
coupled motor, mounted on rubber tires,
capacity 2" pipe, 1 1/4" Angle and 1 1/2" Bar.
Westinghouse Electric Motor, 3 HP, 1155 RPM,
220/440 V, 3 phase, 60 cycle, 9.4/4.7 amps.
776
O/A Dim: 8'L X 3'W X 3 1/2'H.
With accessories including dies.
NID 251-804103.
Outside - Bldg. 21ONEWSHD - Unpacked - Used -
Poor Condition - Repairs Required
Total Cost \$2868
Est. Total Wt. 3000 lbs. 1 EACH

ITEM 90 IS LOCATED AT MCSC, BARSTOW, CALIFORNIA

90. GRINDING MACHINE, SURFACE: Reciprocating
designed, floor mounted, spindle position
horizontal, Sommers and Maca Glass Machinery
Co., style 20A-106WBRB, spindle diameter 1.5"
work surface 18.0" L, work surface 6.0" W,
longitudinal travel 20.0". Feed method power,
wheel diameter 7.0" head vertical adjustment
12.0" head feed type hand, distance from spindle
center end to work surface to 14.24", power
source electric motor, HP rating 1.0, 230
VAC, 60 cycles, 3 phase. Parts missing
including electric motor and belts.
500,
FSN 3415-223-6336.
Inside - Unpacked on pallet - Used - Poor
Condition
Total Cost \$4776
Est. Total Wt. 900 lbs. 1 EACH

ITEM 91 IS LOCATED AT LUKE AIR FORCE BASE, ARIZONA

91. WELDING MACHINE: Rex Welding and Eng. Co.,
electrical resistance, spot, press type, 3
PH, Type AN-AS-PRO,RE-100, P/N W7973-A-2,
S/N 9959, size 100 KVA, class A, 60 cycle,
208/220/440/550 V. NSN 3432-00-255-9992.
603.
Outside - Sales Yard - Skid Mounted - Used -
Poor Condition
Total Cost: \$7210
Est. Total Wt: 7500 lbs. 1 EACH

ADDITIONAL GENERAL INFORMATION & INSTRUCTIONS SEALED BID

(See DPDS pamphlet, "Sale by Reference, August 1973" and/or DLSC pamphlet, "Sale by Reference, February 1971", for General Information and Instructions 1 thru 16.)

17. PREPARATION OF ENVELOPE: Envelopes containing bids must be sealed. The return address entered in the upper left corner of envelope should be the same as the bidder name and address entered on the bid form. The lower left corner should indicate the sale number and date and hour of bid opening. If a "Bidder Identification Number" has been assigned to the bidder, by the Defense Property Disposal Service, this number should also be entered on the face of the envelope. Prepare envelope as indicated below:

Name (Same as on Bid Form) Address of Bidder (Zip Code)	Sales Contracting Officer Defense Property Disposal Region Post Office Box 53 Defense Depot Ogden Station Ogden, Utah 84407
Bid - Sale No. (Enter Sale No.) Opening Date & Time: (Enter date & time) BIDDER IDENT. NO. (If Assigned)	

CAUTION

DO NOT MAIL BIDS TO DOD SURPLUS SALES, P. O. BOX 1370, BATTLE CREEK, MICHIGAN

18. TELEGRAPHIC MODIFICATIONS OF BIDS: Telegraphic modifications (or withdrawals) of bids are to be sent to the Sales Contracting Officer, Defense Property Disposal Region, TELEX No. 388-351, answer back code DPDR OGED, Defense Depot Ogden, Ogden, Utah, and must be received prior to the time set for bid opening.
19. **INSPECTION DATE AND TIME** Beginning 13 Nov. 1975 excluding Saturdays, Sundays and Federal holidays.
Inspection hours: 8:00 A.M. to 3:00 P.M.
20. ELIGIBILITY OF BIDDERS: Notwithstanding the provisions of Condition No. 24, General Sale Terms and Conditions (Standard Form 114C) which requires a bidder to certify he is not under 21 years of age, individuals 18 years of age or older are eligible to bid on this sale.
21. PAYMENT REQUIREMENT: Full payment for the property must be made directly to the sales office conducting the sale.
22. NOTICE: Bids on this sale will be processed by automatic data processing equipment under a system which is not capable of evaluating combination bids. Accordingly, qualified, tie-in, all-or-none or other combination or floating bids will be rejected. **BIDDERS MUST** submit a distinct individual price for each item bid upon in order for their bids to be considered for the award.
23. Foreign National's who desire to inspect or remove surplus property at Defense Property Disposal Office, Bremerton must obtain prior clearance to enter. Requests for entry must be received by the Defense Property Disposal Office, P.O. Box 2-B, Naval Base Post Office, Puget Sound Naval Shipyard, Bremerton, Washington 98314, at least 5 days in advance of the anticipated visit. Requests for clearance may be directed by telephoning A/C 206, 278-7317.
24. Bidders requiring entry to Puget Sound Naval Shipyard, Bremerton, Washington to inspect or remove surplus property must enter via the Farragut Avenue gate only.

CONDITIONS OF SALE - SEALED BID

The General Information and Instructions and General and Special Conditions of sale are hereby incorporated by reference and become a part of this Invitation for Bids and any contract resulting from acceptance of bid submitted pursuant to this Invitation for Bids as fully as though such Instructions, Terms and Conditions had been specifically set forth herein. The Instructions, Terms and Conditions are contained in Defense Property Disposal Service pamphlet entitled "Sale by Reference - Instructions, Terms and Conditions Applicable to Department of Defense Surplus Personal Property Offered For Sale by Defense Property Disposal Service, dated August 1973" and DLSC pamphlet entitled "Sale by Reference - Instructions, Terms and Conditions Applicable to Department of Defense Surplus Personal Property Offered by Defense Surplus Sales Offices, dated February 1971". The Instructions, Terms and Conditions in each of the pamphlets are identical. The pamphlet, dated August 1973, may be obtained upon request from the following address: DoD Surplus Sales, P.O. Box 1370, Battle Creek, Michigan 49016. Copies are also available for review at each Defense Property Disposal Region sales office and Defense Property Disposal Office. The specific Instructions, Terms and Conditions applicable to this sale are as follows:

DPDS pamphlet, "Sale by Reference, August 1973" and/or DLSC pamphlet, "Sale by Reference, February 1971":

- Part 1: General Information and Instructions (DPDS Form 81, Aug 73 and/or DLSC Form 81, Feb 71), Complete.
- Part 2: General Sale Terms and Conditions (Standard Form 114C, Jan 70 Ed. and DPDS Form 84, Aug 73 and/or DLSC Form 84, Feb 71), All Conditions, EXCEPT Condition No. 30 - See Article BB below.
- Part 3: Special Sealed Bid Conditions (Standard Form 114C-1, Jan 70 Ed.), All Conditions. Bidders particular attention is drawn to Condition A which reads as follows.

"A. BID DEPOSITS. Where a bid deposit is required by the Invitation, all bids must be accompanied by such deposit in the amount of 20% of the total amount bid which must be in the possession of the Contracting Officer by the time set for bid opening. Bid deposits shall be in the form prescribed in Condition No. 4, General Sale Terms and Conditions (Standard Form 114C). Deposit Bond-Individual Invitation, Sale of Government Personal Property (Standard Form 150) properly executed or, when provided for in the Invitation, reference to an approved Deposit Bond-Annual, Sale of Government Personal Property (Standard Form 151) are acceptable in lieu of the form of deposit authorized in Condition No. 4, General Sale Terms and Conditions (Standard Form 114C). Any bid which is not timely supported by an acceptable bid deposit may be rejected as nonresponsive. Any bid deposit received after bid opening will be considered in the same manner as late bids."

- Part 7: Special Circumstance Conditions (DPDS Form 86, Aug 73 and/or DLSC Form 86, Feb 71). As specified in item description.

IN ADDITION TO THE ABOVE THE FOLLOWING IS ALSO INCORPORATED AS PART OF THIS SALE:

ARTICLE BA: PAYMENT. Notwithstanding any provision of this Invitation to the contrary, payment of the full purchase price prior to removal of any of the property must be made in cash, certified or cashiers check, postal or telegraphic money order. UNCERTIFIED PERSONAL OR BUSINESS CHECKS ARE NOT AN ACCEPTABLE FORM OF PAYMENT. In the event an uncertified business or personal check that was accepted as a bid deposit has been honored by the drawee prior to the removal of property, such amount shall be credited to the balance due the Government.

ARTICLE BB: GUARANTEED DESCRIPTIONS. Notwithstanding any other provisions of this Invitation for Bids to the contrary, and subject to the limitations and conditions set out in subparagraphs a and b below, all of which are of the essence, the Government guarantees to the original Purchaser of the property that the property delivered or offered for delivery under any contract resulting from this Invitation for Bids will be as described in the Invitation for Bids.

a. That if a misdescription is determined to exist prior to removal of the property from Government control, that the sole and exclusive remedy available to the Purchaser will be refund of the purchase price of the property as to which such misdescription exists, or such portion thereof as the Government may have received.

b. That if a misdescription is determined to exist after removal of the property from Government control, then the Government will make an adjustment in the purchase price paid for the property commensurate with the market value of the property actually received provided, however, that:

(1) No adjustment will be made for shortages of property offered for sale by the "lot", and

(2) No adjustment will be made unless the Purchaser mails or otherwise furnishes to the Contracting Officer a written notice, within 30 calendar days from date of removal of the property, that the property is misdescribed and holds the property sufficiently intact to permit identification by the Government, PROVIDED FURTHER THAT THE GOVERNMENT DOES NOT WARRANT OR GUARANTEE ANY OF THE FOLLOWING:

(a) That the item description contains all specific characteristics or performance data pertaining to the item described.

(b) The stated condition of the property, the total cost of the property, the estimated total weight, the estimated shipping dimensions, suggested uses of the property, and the property's fitness for any use or purpose.

(c) Estimates as to the "weight" of the property offered for sale by the "unit" or by the "lot".

(d) Estimates as to the number of units of property offered for sale by "weight".

(e) In the event the Government uses a manufacturer's part or reference number or a Federal Stock Number in addition to detailed descriptive data in the item description, the descriptive data applicable to such part or reference number or Federal Stock Number is not guaranteed if it is inconsistent with the detailed descriptive data applicable to the item description.

CONDITIONS OF SALE — SEALED BID (CONTINUED)

(f) To the extent property is described solely by noun nomenclature, manufacturer's part or reference number and Federal Stock Number, the description data applicable to the Federal Stock Number is not guaranteed if it is inconsistent with the descriptive data applicable to the manufacturer's part or reference number.

(g) In no event will the term "or interchangeable" following a manufacturer's part or reference number be construed to guarantee that the property described consists of the part or reference number in whole or in part. Only functional interchangeability with the part or reference number is guaranteed.

c. Notwithstanding any of the exceptions stated in subparagraph b (2) (a) through (g) above, however, the Government will accept return of any property determined to have been misdescribed, to a location specified by the Contracting Officer at the Purchaser's expense, and refund to the Purchaser the purchase price or such portion thereof as the Government may have received, provided timely notice of the misdescription has been furnished to the Contracting Officer in accordance with the requirements of subparagraph b (2) above.

d. The foregoing guarantee is in lieu of all other guarantees, express or implied, and all other obligations on the part of the Government to deliver or offer for delivery property as described in the Invitation for Bids and shall not entitle the Purchaser to any payment for loss of profits or any other money damages, special, direct, indirect, or consequential; nor shall any recovery of any kind against the Government under this provision be greater in amount than a refund of the purchase price of the specific material found to have been misdescribed.

ARTICLE BC: INTEREST. Condition No. 11, General Sale Terms and Conditions (Standard Form 114C) is hereby amended by increasing the stated interest rate from six percent to eleven percent.

ARTICLE BD: MILITARY/MUNITIONS LIST ITEMS. (1) The purchaser warrants and covenants that except as permitted by this clause, none of the items identified in the Sales Invitation for Bids or contract as subject to this Article will be directly or indirectly used or disposed of for military use or exported from the United States, Puerto Rico or the Virgin Islands without a full disclosure of the origin of the property by reference to this Invitation for Bids and contract number being made to the appropriate export licensing department or agency. (2) Notwithstanding the provisions of Paragraph (1) above, Military Munitions List items which do not require demilitarization may be sold for military or other use to the United States Government, its designees and to such foreign governments or international organizations as to which the United States Department of State issues an export license under the International Traffic In Arms Regulations (see 22 CFR, Subchapter M, Part 121, et seq.).

LOADING TABLE

(See DPDS pamphlet, "Sale by Reference, August 1973" and/or DLSC pamphlet, "Sale by Reference, February 1971", Part 2, Condition No. 8, Standard Form 114C.)

TIME FOR REMOVAL. The removal period is established on the basis that a written notice of award will be made by 10 December 1975. Should the written notice of award on any item(s) not be made by the above date, an appropriate allowance will be made in the date of removal for such items. Property must be removed by: 9 January 1976.

LOADING LEGEND

- | | | |
|---|---|---------------------------------------|
| <p>I - Government will load.</p> <p>II - Government will load - Open top conveyance only.</p> | <p>III - Government will load - No rail facilities available for use by the purchaser.</p> <p>IV - Purchaser must load - No assistance will be furnished by the Government.</p> | <p>V - Other restrictions.</p> |
|---|---|---------------------------------------|

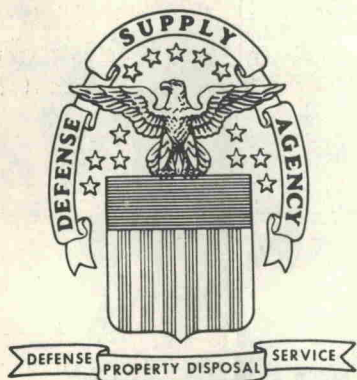
LOADING HOURS:

<u>ITEM</u>	<u>LOCATION</u>	<u>LOADING</u>
1 thru 36	NAS, Miramar	See Legend III (See A below)
37 thru 52	NAS, North Island	See Legend III
53 thru 57, 59	NCBC, Port Hueneme	See Legend I
58	NCBC, Port Hueneme	See Legend III
60 and 61	McClellan AFB	See Legend III
62 thru 68	Rough & Ready Island	See Legend I (See B below)
69 thru 71	Mare Island Naval Shipyard	See Legend I
72	Mare Island Naval Shipyard	See Legend II (See A below)
73	Oakland Army Base	See Legend III
74	Umatilla Army Depot	See Legend I
75 thru 77	Fort Lewis	See Legend I
78	Defense Depot Ogden	See Legend I
79 thru 85	Tooele Army Depot	See Legend I
86 and 87	Pueblo Army Depot	See Legend V. Government will load flatbed truck/trailer only.
88 and 89	Puget Sound Naval Shipyard	See Legend III
90	MCSC, Barstow	See Legend III
91	Luke AFB	See Legend I

NOTES:

- A. The purchaser shall notify the Property Disposal Officer 24 hours in advance of desired pickup.
- B. The purchaser shall notify the Property Disposal Officer 48 hours in advance of desired pickup.

IFB 41-6202



DEFENSE PROPERTY DISPOSAL REGION-EUROPE

ANNOUNCES A GIGANTIC SPOT BID SALE

IFB 50-6100

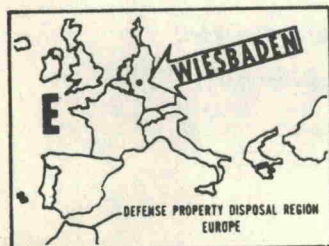
TO BE HELD IN LATE NOVEMBER 1975

SALE INCLUDES.....

WHEELED VEHICLES, TRAILERS, CRANES (CRAWLER AND TRUCK MOUNTED), TRACKED TRACTORS (IHC AND CAT), ROUGH TERRAIN FORKLIFTS, GENERATORS, PUMPS, TRACKED CONCRETE PAVING MACHINES, GRADERS, WHEELED INDUSTRIAL TRACTORS (CLARK AND CAT), CONVEYORS, CRANE ATTACHMENTS, ROCK CRUSHERS, COMPRESSORS, VEHICLE PARTS AND ACCESSORIES, MATERIAL HANDLING EQUIPMENT.

**MAILED AND HAND CARRIED BIDS WILL BE ACCEPTED.
20 PERCENT DEPOSIT REQUIRED**

A SALE CATALOG MAY BE OBTAINED BY WRITING TO:
(WRITE TO ONLY ONE ADDRESS)



APO MAIL:

Defense Property Disposal
Region Europe
ATTN: Department BR
APO New York 09332

INTERNATIONAL MAIL:

Defense Property Disposal
Region Europe
D 6200
Wiesbaden 1
ATTN: Department BR
Postfach 2027
West Germany

PAGE NO. 18

IMPORTANT NOTICE TO ALL BIDDERS
CONCERNING RECEIPT OF SALES CATALOGS

If the numeral 2 appears in the first line between the two "@" signs of your address label ...

888888 @2@ SALE 01-3100

... it means that you must notify the Defense Surplus Bidders Control Office that you desire to continue receiving sales catalogs or your name will be removed from our bidders list.

COMPLETE THE FOLLOWING FORM AND MAIL THIS PAGE (with your address label on the back) TO THE ADDRESS SHOWN ON THE FORM:

<u>CHANGE FORM</u>	
MAIL TO: DOD SURPLUS SALES P. O. BOX 1370 BATTLE CREEK, MICHIGAN 49016	***** * NOTE!! * * DO NOT MAIL BIDS * * TO THIS ADDRESS * *****
<input type="checkbox"/> 1. Continue Sending Sales Catalogs	
<input type="checkbox"/> 2. Discontinue Sending Sales Catalogs	
<input type="checkbox"/> 3. Change of Address (print new address below)	
<input type="checkbox"/> 4. Send Bidders List Application	
NAME _____	
ADDRESS _____	
CITY _____ STATE _____ ZIP CODE _____	

To continue receiving sales catalogs, check Block No. 1 on the form shown above. It is necessary to mail only one form within a 30-day period.

If you no longer wish to receive sales catalogs, check Block No. 2 on the above form.

To change your address, check Block No. 3 on the above form and print your new address. Allow four weeks for change to be effected.

NEW BIDDERS - If you wish to be placed on the mailing list to receive sales catalogs, check Block No. 4 and print your name and address

POSTMASTER: If undeliverable return to

DOD Surplus Sales

P. O. Box 1370

Battle Creek, Michigan 49016

OFFICIAL BUSINESS

PENALTY FOR PRIVATE USE, \$300

Department of Defense Sale No. 41-6202

187-0293951	#416202	UT	10949	810
HALL H TRACY	CNC			
PO BOX 7533				
PROVO				

POSTAGE AND FEES PAID
DEFENSE SUPPLY AGENCY

DoD-304

FIRST CLASS MAIL

